



# Xtra-Gold Resources Corp.

A wide-angle landscape photograph showing a valley with a town, surrounded by lush green hills and mountains under a cloudy sky. The town is visible in the middle ground, with numerous buildings and roads. The foreground is dominated by dense green foliage and trees.

**TSX : XTG / OTCQB : XTGRF**

Pioneering the Discovery of a New Gold Belt in Ghana, West Africa

CORPORATE PRESENTATION

Q1 2026

## CAUTIONARY STATEMENT: FORWARD-LOOKING INFORMATION / TECHNICAL DISCLOSURE

Statements contained in this Presentation that are not based on historical fact are “forward-looking statements”. Forward-looking statements may be identified by the use of forward-looking terminology such as “may”, “expect”, “believe”, “estimate”, “anticipate”, “intend”, “plan”, “continue” or similar terms variations of those terms or the negative of those terms. These forward-looking statements are based on information currently available to us. There are a number of risks, uncertainties and other factors that could cause our actual results, performance, prospects or opportunities to differ materially from those expressed in or implied by these forward-looking statements.

Each person, company or company representative who receives a copy of this Presentation (“Recipient”) should not attribute undue certainty to any forward-looking statement. Except as otherwise may be required by federal securities laws, we undertake no obligation to publicly update or revise any forward-looking statement, whether as a result of new information, future events, changes circumstances, or any other reason, after the date of this Presentation.

This Presentation has not been reviewed, approved or disapproved, nor has the accuracy or adequacy of the information set forth herein been passed upon by the Securities and Exchange Commission or any state securities administrator or any United States, Canadian securities regulatory authorities or any other country, federal or state regulatory body. Any representation to the contrary is a criminal offense.

This Presentation is being made on a confidential basis for use solely in connection with a potential investment. The disclosure of any of the data contained herein or supplied in connection herewith or the use thereof for any other purpose, except with our written consent, is strictly prohibited. This Presentation is being made on a confidential basis for use solely in connection with a potential investment. The disclosure of any of the data contained herein or supplied in connection herewith or the use thereof for any other purpose, except with our written consent, is strictly prohibited. This Presentation may not be reproduced, in whole or in part and it is accepted by a Recipient with the understanding that it will be returned at our request.

Any Recipient of this Presentation may, if he or she so desires, make inquiries of appropriate members of our Management with respect to our business or any other matters set forth herein and may obtain any additional information which such person deems to be necessary in order to verify the accuracy of the information contained in this Presentation (to the extent that we possess such information or can acquire it without unreasonable effort or expense). In connection with such inquiry, any documents which any Recipient wishes to review will be made available for inspection and/or copying. Prior to review of the documents or information, each Recipient may be required to sign a confidentiality agreement restricting the subsequent use of the information. Any such inquiries or requests for additional information or documents should be made in writing to our President and CEO, James Longshore.

Recipients are not to construe the contents of this Presentation as legal or tax advice. Each Recipient should consult his own counsel, accountant and other advisors as to legal, tax and related matters relating to any relationship with Xtra-Gold.

No person has been authorized to give any information or to make any representations other than those contained in this Presentation in connection with a potential investment in our Company and, if given or made, such information or representations must not be relied upon as having been authorized by us. This Presentation does not constitute an offer to sell or the solicitation of any offer to buy any security of Xtra-Gold Resources Corp. (“Xtra-Gold”), nor does it constitute an offer to sell or a solicitation of any offer to buy such securities by anyone in any jurisdiction. Any offer or sale of securities of Xtra-Gold will only be made by a separate offering document and definitive agreement which this Presentation does not form a part thereof.

This Presentation contains summaries or significant documents. Although such summaries are believed to be fair and accurate, they do not purport to be a complete description of every term and condition and reference is hereby made to the actual documents for complete information relating to the rights and obligations of the parties thereto. The summaries are qualified in their entirety by this reference.

In making a decision to do business with Xtra-Gold, any Recipient must rely on their own examination and due diligence investigation of Xtra-Gold, including the merits and risks involved. We cannot guarantee you that the abbreviated nature of this Presentation will not omit to state a material fact which someone may believe to be an important factor about Xtra-Gold. As a result, any Recipient is required to undertake his own due diligence of Xtra-Gold, our current and proposed business and operations, our Management and our financial condition to verify the accuracy and completeness of the information we are providing in this Presentation.

The lode gold exploration technical information in this presentation was prepared by Yves P. Clement, P.Geo., Vice President, Exploration for Xtra-Gold Resources Corp.; a non-independent Qualified Person as defined by National Instrument 43-101. The technical information contained in this presentation has been compiled from NI 43-101 compliant technical reports and news releases with specific underlying Qualified Persons as set out in the releases and reports, and publicly available industry information. Please refer to SEDAR+ for complete information ([www.sedarplus.com](http://www.sedarplus.com)). This presentation reports on the technical information of the company’s exploration projects up to December 31, 2025, and provides a guide to the company’s potential future activities and use of funds. There can be no assurances that the company objectives will be achieved. Industry information has been compiled from publicly available sources and may not be complete, up to date or reliable. Readers are cautioned that any information regarding adjacent or geologically similar mineral properties are not indicative of mineral deposits on the company’s properties.

Mineral resources are not mineral reserves and by definition do not demonstrate economic viability. This mineral resource estimate includes inferred mineral resources that are normally considered too speculative geologically to have economic considerations applied to them that would enable them to be categorized as mineral reserves. There is also no certainty that these inferred mineral resources will be converted to the measured and indicated resource categories through further drilling, or into mineral reserves, once economic considerations are applied. There can be no assurance that any of the assumptions in the resource estimates will be supported by a Pre-feasibility or Feasibility Study or that any forward-looking event will come to pass



## INVESTMENT HIGHLIGHTS

1

### XTRA-GOLD'S KIBI GOLD DISCOVERY

- Mineral Resource Estimate ("MRE") with Effective Date of Sept. 30, 2024: 1,058,200 ounces of gold in Indicated category (27,532,000 tonnes grading 1.20 g/t Au); and
- Additional 180,700 ounces of gold in Inferred category (5,694,000 tonnes grading 0.99 g/t Au)
- 5 Mining Leases totaling 55,905 acres (226 km<sup>2</sup>) in a significant but unexplored district in one of the world's most prolific gold regions

2

### STRONG CAPITAL POSITION

- US\$18M+ in cash, securities and gold bullion ("liquid assets") with zero debt
- US\$10M+ sold in gold bullion from alluvial gold mining operations in 2025 ("Community Mining Project")
- Recurring annual revenues generated through Community Mining Project to fund hard rock exploration
- Total Income before tax of US\$7,111,606 generated in 2025 (includes Q1, Q2 & Q3 2025)

3

### EXPLORATION & DRILL PROGRAMS FUNDED

- US\$4M+ spent on equipment at the Company's mine camp, including 4 Diamond Drill rigs
- US\$1M spent on VTEM Survey & IP Surveys to assist in identifying new lode gold targets
- US\$2M+ spent on reconnaissance exploration work (soil sampling, trenching, etc.):
  - Exploration drilling currently ongoing on 2 potential resource expansion gold zones within the general MRE footprint area, with 3 drill-ready, stand-alone targets offering additional resource expansion opportunities on the Kibi Gold Project

4

### SHAREHOLDER & MANAGEMENT ALIGNMENT

- Key members of management team have all been in place since IPO in 2010
- Founders, Management, Friends & Family own 50%+ of outstanding shares
- Low outstanding share count
- Company has focused on retaining shareholder value:
  - Use proceeds from Community Mining Project to fund exploration costs
  - 5M+ shares repurchased and retired through NCIB effected in 2014

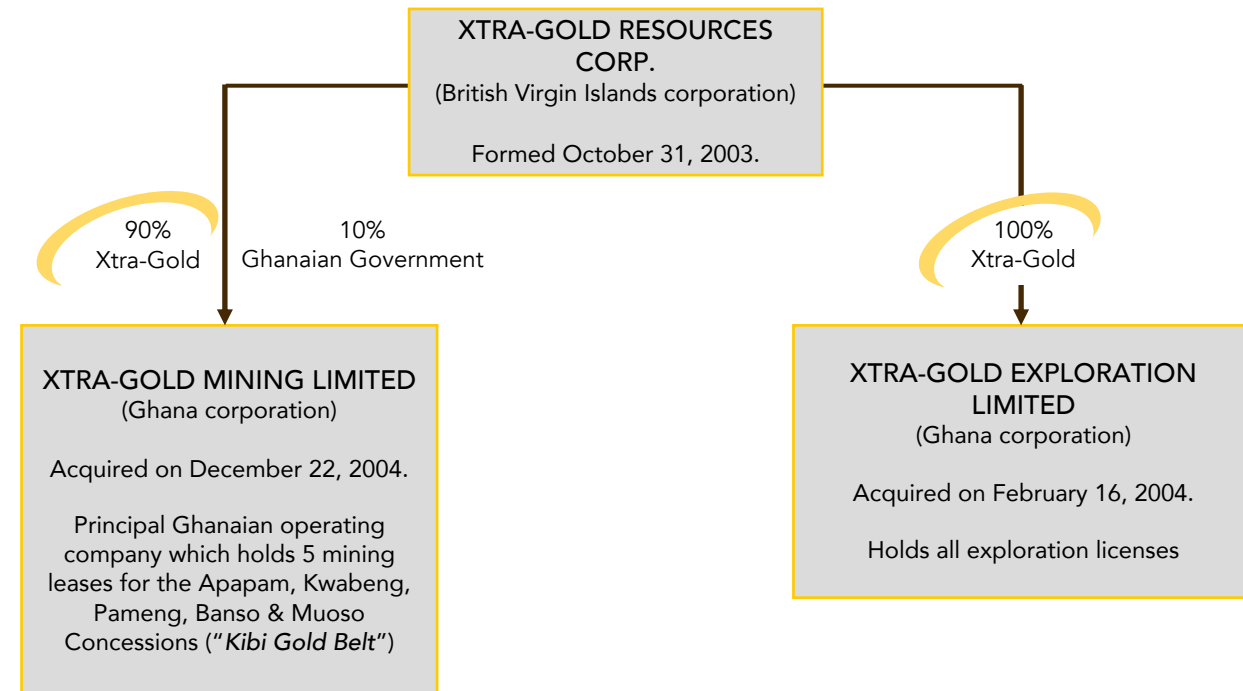
## CAPITAL & CORPORATE STRUCTURE

**TSX : XTG**  
**OTCQB : XTGRF**

Share Price (USD as of Feb. 6, 2026)	\$2.26
Shares Outstanding	46,769,217
Options and Warrants	3,584,500
Fully Diluted	50,353,717
Market Cap (USD)	\$105,698,430
Total Assets (USD as of Sept. 30, 2025) Mainly Cash, Liquid Securities and Bullion	\$19,332,270
Debt	Nil

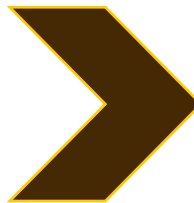
SHAREHOLDER	SHARES (M)	%
Founders & Management	~12M	~25.6
Friends and Family	~16M	~34.2
	<b>TOTAL</b>	<b>~59.8</b>

- IPO on the Toronto Stock Exchange: XTG on Nov 23, 2010
  - Raised CAD\$10M @ \$1.35 per share





## GHANA : A Historic and Mining-Friendly Jurisdiction



Ghana is rated by independent agencies as one of the most politically stable countries in Africa. Its risk profile compares favorably with other well-regarded global mining jurisdictions.

- GDP US\$112 Billion (2025)
- 7.7% of GDP from the mining industry
- 2<sup>nd</sup> largest industry behind Financials
- 90% of mineral exports are Gold
- Strong Mineral Laws to protect mining rights
- Population ~35M
- Language - English

## GHANA : Africa's Historic Gold Jurisdiction

GLOBAL GOLD MINE PRODUCTION 2024

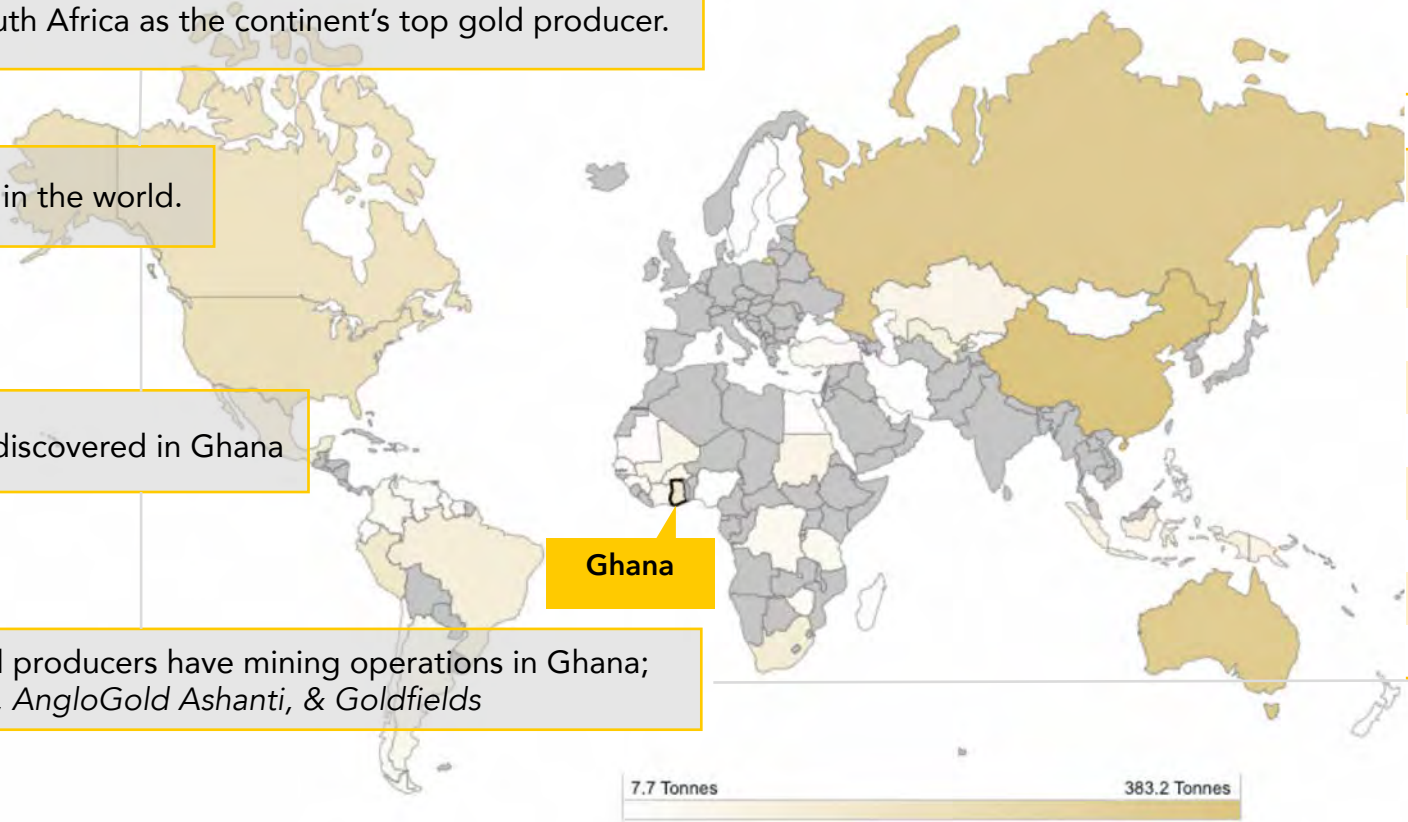
**1<sup>st</sup>** Ghana has surpassed South Africa as the continent's top gold producer.

**6<sup>th</sup>** ... ranked gold producer in the world.

**150M+** Ounces of gold discovered in Ghana

**4** ...of the world's top gold producers have mining operations in Ghana; *Newmont, Zijin Mining, AngloGold Ashanti, & Goldfields*

**10M+** Ghana hosts multiple 10M ounce gold deposits



Country	Annual (oz)
China	13,411,175
Russia	11,746,242
Australia	10,017,816
Canada	7,128,875
United States	5,573,292
Ghana	4,959,524
Mexico	4,948,942
Indonesia	4,941,887
Peru	4,829,010
Uzbekistan	4,553,873

Source: World Gold Council

A yellow arrow graphic pointing to the right, located at the top left of the slide.

## MANAGEMENT

James Longshore  
**President, CEO**

- 30+ years experience with resource-based companies
- Co-Founder of Xtra-Gold Resources Corp.
- Managing Director of Ghana operations since 2009

Yves P. Clement  
**Vice-President, Exploration**

- 35+ years international experience in generation, evaluation, and development of exploration properties
- Former Senior Project Geologist with Lake Shore Gold Corp. and Aurora Platinum Corp.
- Vice-President of Exploration since 2006

John Ross  
**Finance Manager**

- 35+ years business experience, including 25 years experience in the mining industry
- Former CFO of Iamgold Corp., Quadra FNX Mining Ltd. and Colossus Mineral Inc.
- Chartered accountant and Finance Manager since 2010

**Ghana Management**

- **10 fully dedicated local managers living at our mine camp, with 200 employees**

## LOCATION & INFRASTRUCTURE

- Xtra-Gold's mining camp is the closest to the capital city; 120 km from Accra
- Direct air services to Accra from New York, Amsterdam, Brussels, Dubai, London, & Paris
- Easy access, proximity & power could result in low infrastructure costs for mine construction & operations
  - Newly constructed highway to the concessions
  - Hydro electricity from the main grid runs through the concessions



### 4 MAIN GOLD BELTS OF SOUTHERN GHANA



1. **SEFWI BELT**
  - Ahafo 13M oz
  - Bibiani 6M oz
  - Chirano 3M oz
2. **ASANKRANGWA BELT**
  - Esaase 5M oz
  - Obotan 2M oz
3. **ASHANTI BELT**
  - Akyem 10M oz
  - Obuasi 65M oz
  - Edikan 5M oz
  - Bogoso/ Prestea 17M oz
  - Tarkwa 29M oz
  - Iduapriem 14M oz
4. **KIBI BELT**
  - Xtra-Gold

**EXPLORATION OVERVIEW: *Ghana's Next Great Gold Discovery***

**Strategic Land Package in Emerging Gold Belt**

- Dominant, wholly-owned, land position in highly prospective & under-explored Kibi-Winneba greenstone belt ("Kibi Gold Belt")
- The Kibi Gold Belt is **geologically analogous** to other prolific Birimian greenstone belts of southern Ghana, including the neighboring **Ashanti Gold Belt**- one of the most highly endowed belts in the world with **estimated gold resources over 130M oz.**
- Competitive advantage of **unsurpassed understanding** of gold mineralization controls gained from **15+ years of continuous exploration efforts** in Kibi Gold Belt.
- Xtra-Gold is the **best-positioned explorer** to make the next significant gold discovery in Ghana.



## EXPLORATION OVERVIEW: *Kibi Gold Belt – Untapped Potential*

### Pioneering the Discovery of a New Gold Belt

#### 1. UNDEREXPLORED

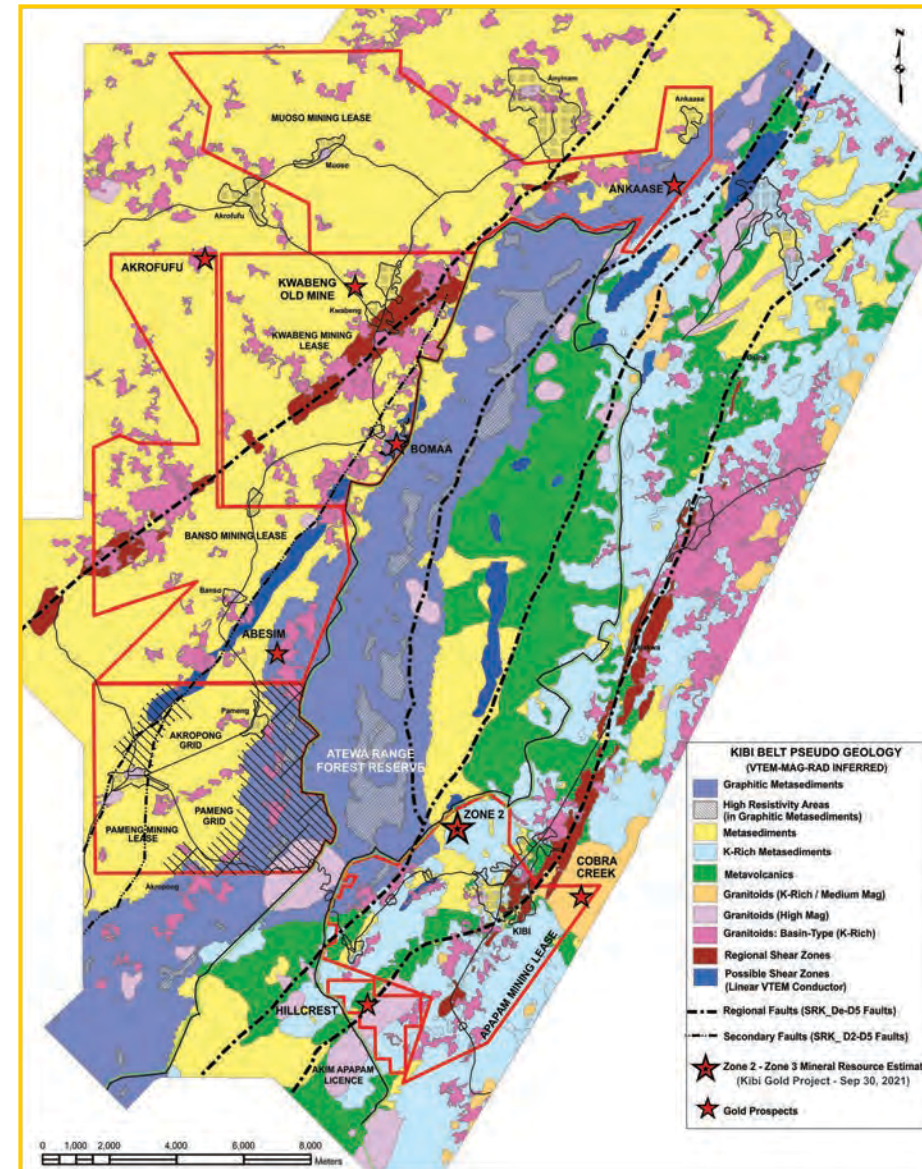
- Historically **limited systematic/modern exploration activity** targeting hard rock (lode gold) deposits in the Kibi Gold Belt
- Virtually all past mining/exploration efforts focused on **extensive alluvial (placer) gold deposits** throughout the Kibi mining district

#### 2. KIBI GOLD DISCOVERY

- Xtra-Gold's **Kibi Gold Project** Mineral Resource Estimate represents the **only Mineral Resource** ever generated on a lode gold project within the **Kibi Gold Belt**

#### 3. EXPANSION

- Exploration drilling** program currently ongoing on the **Lone Tree Shear and Orange No. 5 resource expansion targets** within the general MRE footprint area
- Planned follow up drilling of the **Cobra Creek Gold Corridor and Akwadum South targets**, and initial scout drilling of the **Hillcrest Shear target**, offer additional resource expansion potential for the Kibi Gold Project
- Strong pipeline of drill-ready gold targets** generated from **extensive grassroots exploration** work across the Company's Kibi Belt landholdings over the last 15+ years



## EXPLORATION OVERVIEW: *Kibi Gold Project*

Xtra-Gold's Kibi Gold Project Mineral Resource Estimate represents the only Mineral Resource ever generated on a lode gold project within the Kibi Gold Belt.

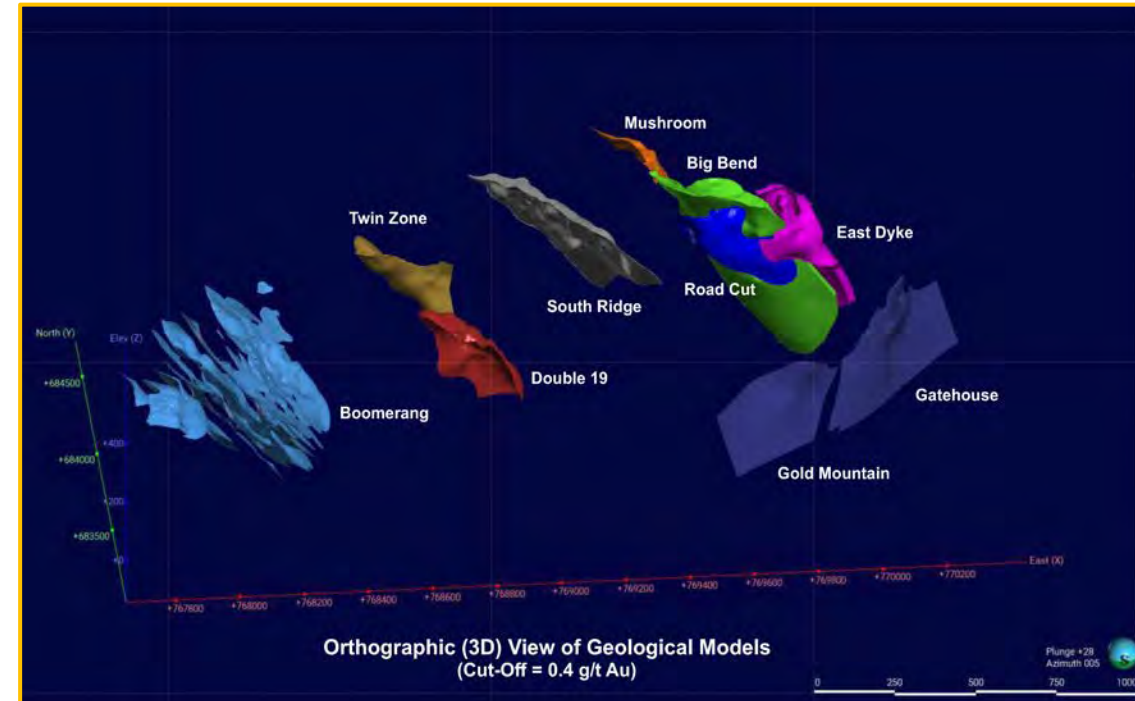
### UPDATED MINERAL RESOURCE ESTIMATE

Zone 1 – Zone 2 – Zone 3  
(Effective Date: September 30, 2024)

RESOURCE CATEGORY	CUT-OFF GRADE (g/t Au)	TONNAGE (t)	AVERAGE GRADE (g/t Au)	CONTAINED GOLD (oz)
Indicated	0.5	27,532,000	1.20	1,058,200*
Inferred	0.5	5,694,000	0.99	180,700

MRE encompasses Big Bend, East Dyke, Mushroom, Road Cut and South Ridge deposits in Zone 2; Boomerang, Double 19 and Twin Zone deposits in Zone 3; and Gatehouse and Gold Mountain deposits in Zone 1; with all gold bodies lying within ~ 2.7 km of each other

- **~83%** of Indicated Mineral Resources (**880,500 oz.**) contained within 3 deposits, including the essentially contiguous Big Bend and East Dyke deposits in Zone 2, and the Boomerang deposit lying ~ 1.5 km to the southwest in Zone 3
- **Exploration drilling** ongoing on **2 potential resource expansion** gold zones within MRE footprint area



**Preliminary metallurgy test work indicates high amenability to:**

- Gravity upgrading (>50% for oxide & >60% for sulphide)
- Cyanidation leaching (>95% recoverable on gravity tails)

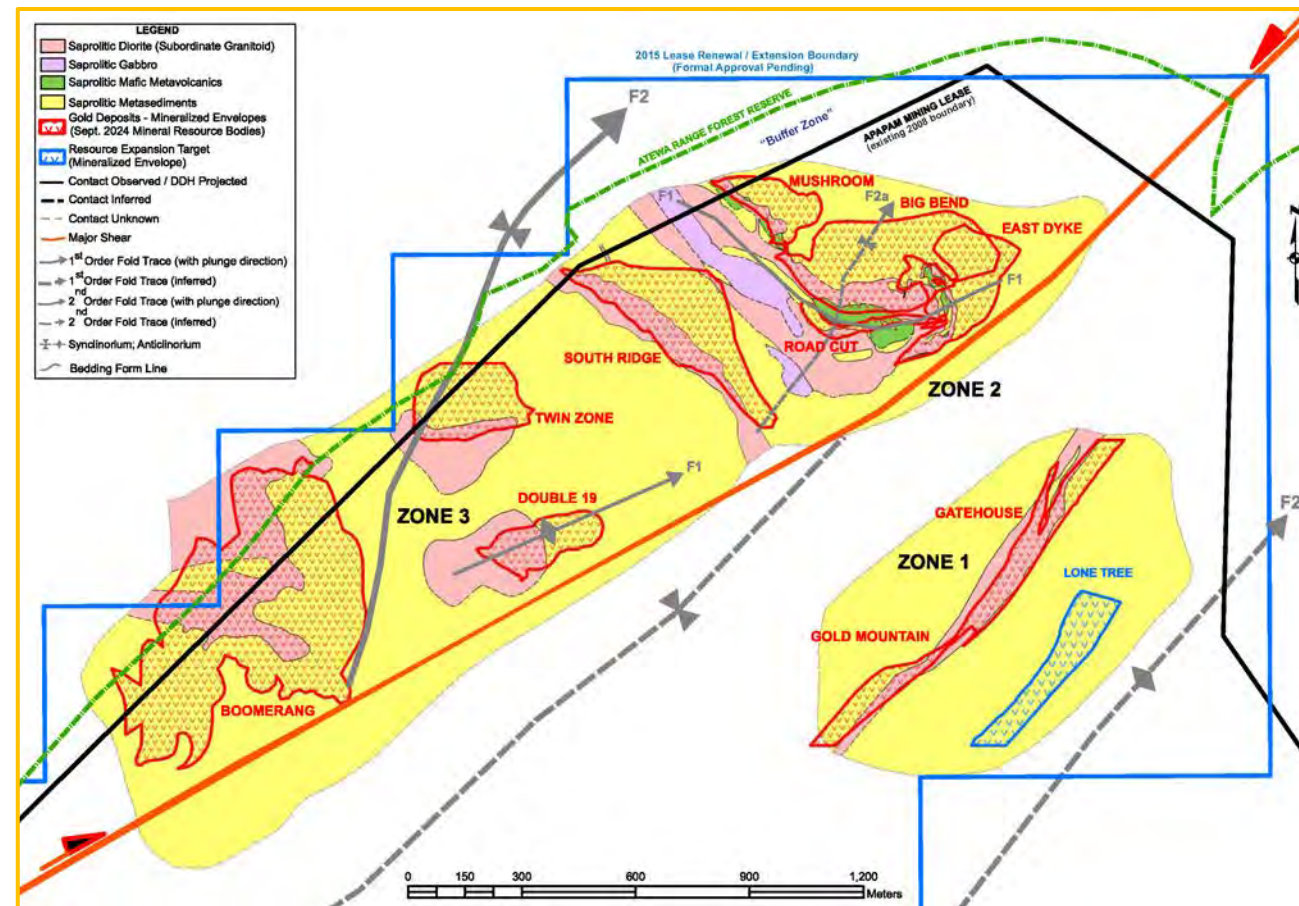
*Known gold mineralization system extends well beyond current resource estimate*

## EXPLORATION OVERVIEW: *Kibi Gold Project*

### Mineral Resource Expansion Potential

#### Zone 1 - Zone 2 - Zone 3 MRE Footprint

- Recently updated MRE forms **solid base** on which to continue growing the Kibi Gold Project resource with **all 10 auriferous bodies remaining open down-plunge** and several bodies remaining open in multiple directions; with follow up drilling offering **good potential** for resource expansion
- Considerable new insight gained** on mineralization controls from recent 3D VTEM / TMI inversion models-based litho-structural modelling work; **significantly increasing** mineralization modeling / targeting confidence
- Zone 2 – Zone 3 **gold deposits** occupy secondary (parasitic) fold structures along the limbs of a licence-scale **1<sup>st</sup>-order F2 synclinorium fold** structure, a **classic setting** for major orogenic gold systems; with gold mineralization consisting of tensional arrays of auriferous quartz-carbonate veins hosted within or spatially associated with F1 or F2 folded / strained diorite units and/or metasedimentary rock – diorite contacts
- Zone 1 **gold deposits** situated on western limb of **1<sup>st</sup>-order F2 anticlinorium fold** structure, with mineralization potentially related to **limb-parallel shears**
- Ongoing exploration drilling targeting **two new resource expansion opportunities** occupying **highly prospective** litho-structural settings, with both early-stage targets returning **strongly positive drilling results** from previous scout drilling; **Lone Tree Shear (Zone 1)** positioned along the same northwestern limb of the F2 anticline on which Gatehouse and Gold Mountain MRE deposits are situated; **Orange No. 5 (Zone 4)** target positioned in proximity to a folded 2<sup>nd</sup> – order syncline along the hanging wall of the regional D2 shear, approximately 2 km SW of currently defined MRE (see Slide 13)

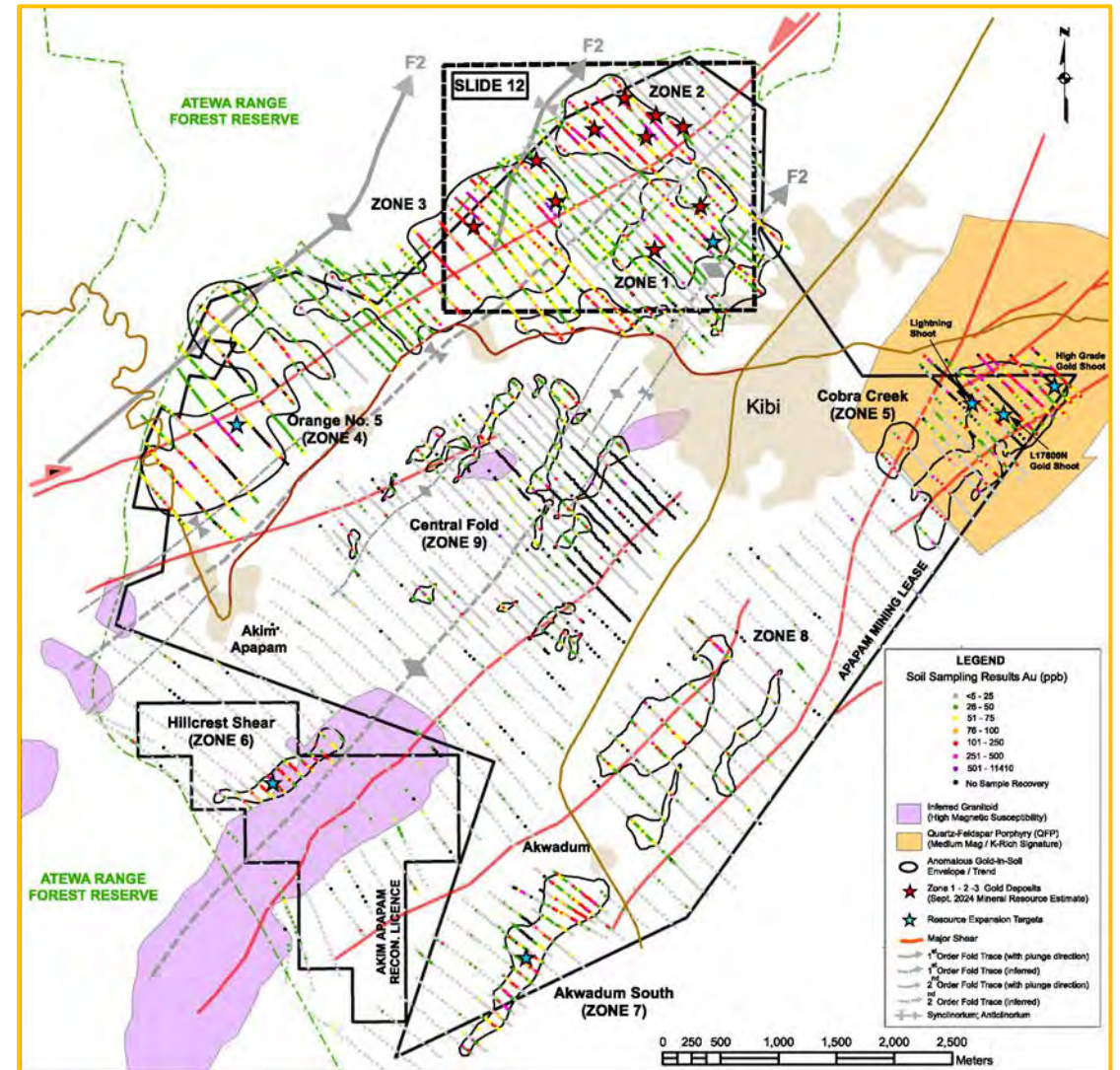


**Cautionary Note:** The Mineral Resource Estimate includes portions of the mineral resources for the Boomerang, Twin Zone and Mushroom deposits, totalling 145,400 gold ounces, lying within the area termed the "Buffer Zone", which encompasses the "open ground" between the existing Apapam mining lease boundary up to the Forest Reserve boundary. Xtra-Gold applied for this Buffer Zone in the original application of extension/renewal of the Apapam mining lease on June 17th, 2015, and in the updated extension/renewal dated June 28th, 2019. These applications were approved by the Technical Committee of the Minerals Commission and certified to be in conformity with the official cadastral system introduced under Ghana Mineral Law. Xtra-Gold is currently awaiting formal approval of the extension/renewal. Although the Company has taken all legal steps to extend the lease with the addition of the Buffer Zone, there is no assurance that such approval will be granted. In the interim, under Ghanaian mining law, the existing lease continues to remain in full force and effect. See the Company's news release of October 16, 2024, for details regarding the portions of the MRE lying within the Buffer Zone.

EXPLORATION OVERVIEW: *Kibi Gold Project*

Expanding Gold Mineralization Footprint

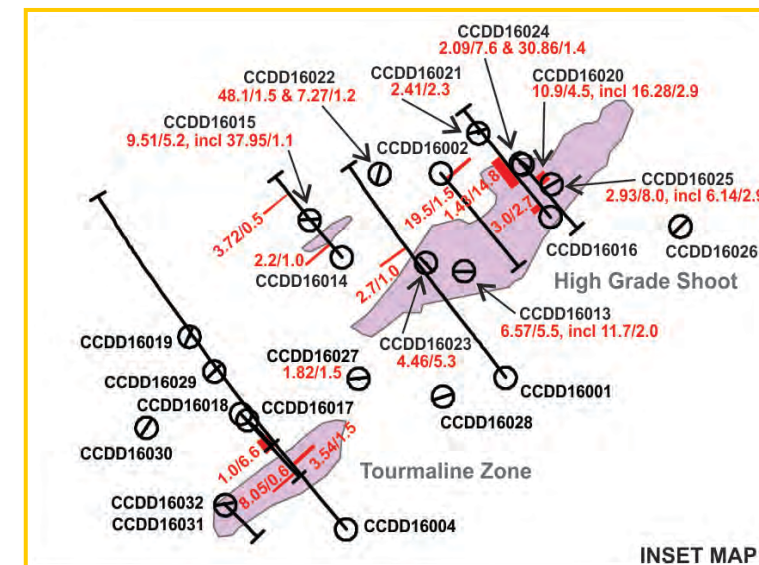
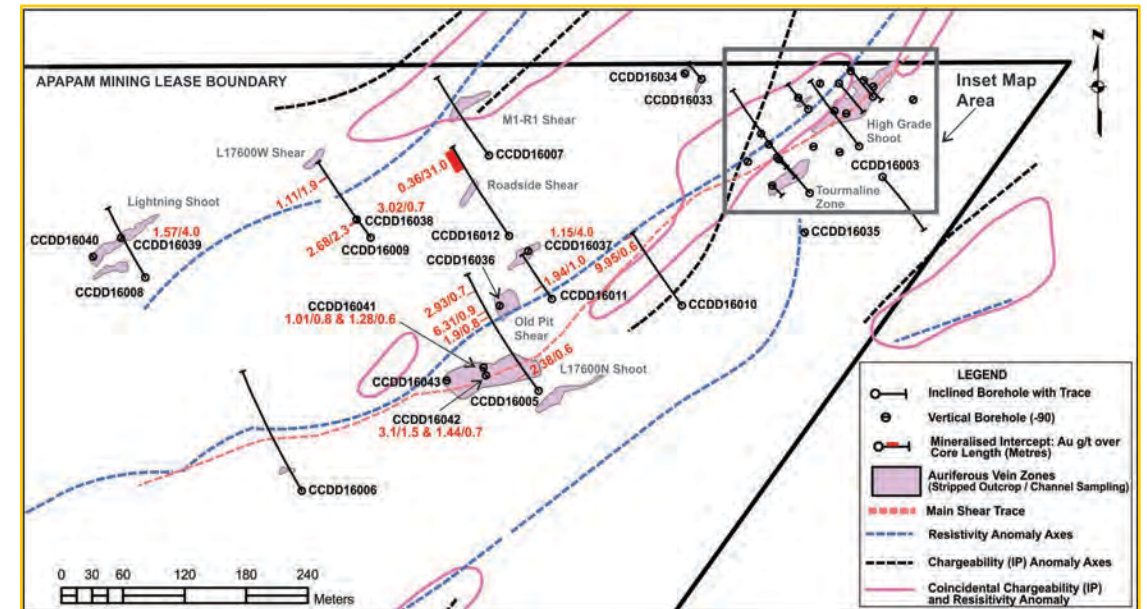
- Current Mineral Resource reflects work on the Zone 1 – Zone 2 - Zone 3 gold-in-soil anomalies, first 3 targets focused on since commencement of field work on project; with **excellent potential to discover new deposits across the Kibi Gold Project**, as well as within the current MRE footprint area
- **Considerable insight gained on mineralization controls over last 15+ years**; permitting prioritization of gold-in-soil anomalies / geophysical targets; and **improved drill targeting**
- **9 priority gold-in-soil trends** yielded by property-wide soil geochemistry with anomalies typically spatially associated with interpreted structural corridors and/or granitoid bodies; **2 new auriferous shear systems** identified to date from gold-in-soil anomaly follow up work
- **Cobra Creek Gold Corridor (Zone 5): ~550 m wide, NE-trending, high-grade gold bearing structural corridor traced over ~850 m strike length**; with QFP-hosted braided shear system encompassing 9 known auriferous structures characterized by widespread, flat-lying extensional veining arrays
- **Hillcrest Shear (Zone 6): auriferous shear spatially associated with 1,200 m x 100 m – 200 m anomalous gold-in-soil trend**; with NE-trending shear zone straddling interpreted Belt-type granitoid along the western limb of an apparent 1<sup>st</sup>-order F2 anticlinorium fold structure; **Scout trenching delineated a ~45 m wide structural zone encompassing a series of parallel shears yielding channel sampling highlights of 5 m at 3.27 g/t gold and 2.65 m at 5.05 g/t gold**



## EXPLORATION OVERVIEW: Cobra Creek Gold Corridor

### Highly Encouraging First Pass Drill Results

- 2,639 m Phase I diamond core drill program (43 boreholes) on Cobra Creek Gold Corridor prospect; an approximately **550 m wide**, NE-trending, quartz-feldspar porphyry ("QFP") hosted, multi-structure braided shear zone system traced to date over approximately **850 m strike length**
- **26 of 43 boreholes yielded exploration significant auriferous drill intercepts**; with high grade quartz – iron carbonate – tourmaline veining in boreholes #CCDD16015, #CCDD16020, and #CCDD16024 exhibiting **multiple visible gold grains**
- Drill result highlights include: **4.5 m grading 10.9 grams per tonne ("g/t") gold**, including **16.28 g/t gold over 2.9 m** in #CCDD16020 and **5.5 m grading 6.57 g/t gold, including 11.7 g/t gold over 2 m** in #CCDD16013 (High Grade Shoot fold structure); and **5.2 m grading 9.51 g/t gold, including 37.95 g/t gold over 1.1 m** in #CCDD16015 and **1.5 m grading 48.1 g/t gold** in #CCDD16022 (High Grade Shoot – NW Branch).
- Surface mapping / drilling observations to date indicate that Cobra Creek high grade gold mineralization hosted by flat-lying, variably folded, extensional veining arrays developed along series of NE-trending, steeply dipping shear zones exhibiting extensive iron carbonate alteration envelopes.
- Considerable new insight gained on structural controls of the high grade gold mineralization to help guide future exploration efforts on Cobra Creek prospect.
- **Follow up drilling planned on highly encouraging first pass drill results** with program design incorporating vertical holes targeting the flat-lying, high grade, extensional veining systems; as well as further testing of steep controlling shears across the auriferous structural corridor.





## TAKEOVER ACTIVITY OF GOLD AND EXPLOATION ASSETS ("M&A")

### RECENT WORLD M&A:

- Osisko Mining (2024): acquired by Gold Fields for US\$1.6 Billion (valued at \$200+ per oz in the "ground")
- Osino Resources (2024): acquired by Shanjin for US\$268 million (valued at \$100+ per oz in the "ground")

### MOST RECENT GHANA M&A:

- Zijin (2025): acquired Newmont Akyem Mine in close proximity to Xtra-Gold's Concessions for US\$1 Billion
- Golden Star (2022) : acquired by Chifeng for US\$470 million
- Cardinal Resource (2021): acquired by Shangdong Gold for US\$450 million

**OUR PROJECT IS ONE OF THE LAST REMAINING MULTI-MILLION OZ POTENTIAL IN GHANA**

**MAXIMIZING SHAREHOLDER VALUE**

**WE ARE TRULY UNIQUE FOR A GOLD EXPLORATION COMPANY**

**LAST REGIONAL GOLD "PLAY" IN SOUTHERN GHANA**

- Our Kibi Gold Belt is the last remaining gold belt in Ghana, that was not "drilled out" to discover it's hard rock sources prior to Xtra-Gold

**UNIQUE FEATURES**

- Generate cashflow to fund all exploration work (self-financed)
- All our mining leases are permitted to mine
- Our drill rigs are Company owned reducing our costs by app. 80%
- Our shareholder have suffered no share dilution for 15 years

**METRICS**

- Currently, the Company is trading at a valuation of **US\$58** per oz "in the ground"
- At US\$3,000 physical gold price there is US\$96 worth of gold for every share outstanding
- Valuing our resource at US\$150 per oz "in the ground" the net asset value ("NAV") of our Company is **US\$5.22** per share

*GOAL : Define 2+ million ounces of gold*

*Defining a multi-million ounce resource & make the Kibi Gold Discovery a significant "gold camp"*



**Xtra-Gold** Resources Corp.

**TSX : XTG / OTCQB : XTGRF**

Pioneering the Discovery of a New Gold Belt in Ghana, West Africa

**Contact:**

James Longshore  
CEO

E: [info@xtragold.com](mailto:info@xtragold.com)

T: 1-242-363-3864